



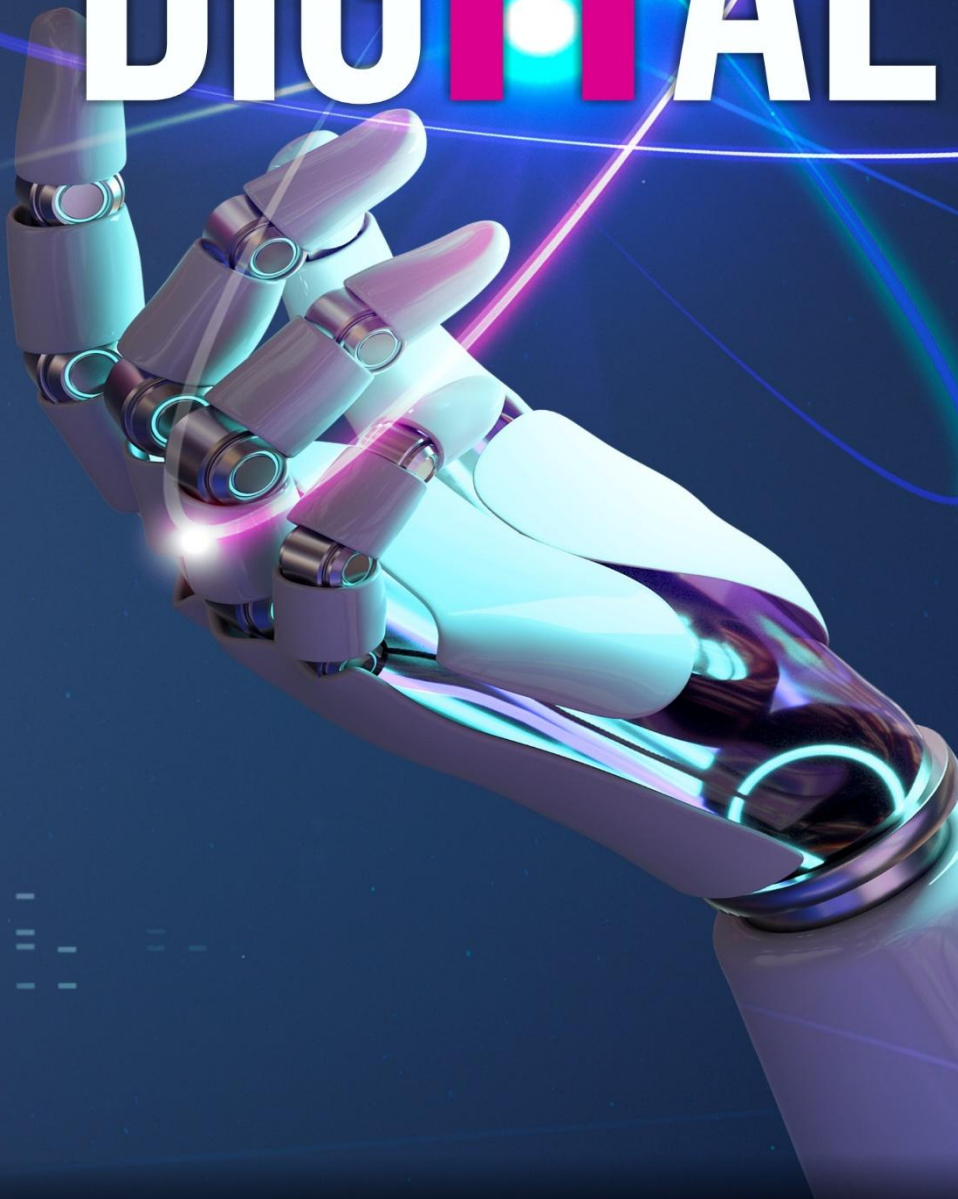
**VIDYABHARTI TRUST COLLEGE OF
BUSINESS, COMPUTER-SCIENCE AND RESEARCH, UMRAKH**

(Affiliated with Veer Narmad South Gujarat University, Surat)

**Department of Computer Application
Newsletter**

GET TO KNOW MORE ABOUT

DIGITAL +



VOLUME 06
ISSUE 06
JUNE 2026

Contents

| | |
|--------------------------------------------------------------------------------|-----------|
| Jenni AI: An Intelligent Writing Assistant for Modern Researchers | 3 |
| What is Jenni AI? | 7 |
| How Jenni AI Works | 8 |
| Key Features of Jenni AI..... | 9 |
| Advantages of Using Jenni AI | 13 |
| Limitations of AI Writing Tools | 14 |
| Role of AI Tools in Modern Education..... | 14 |

Jenni AI: An Intelligent Writing Assistant for Modern Researchers

In the modern digital era, artificial intelligence (AI) is transforming many aspects of education and research. From data analysis to automated writing assistance, AI tools are helping students and researchers improve their productivity and efficiency. One such powerful tool is Jenni AI, an AI-based writing assistant designed specifically for academic and research writing.

Writing research papers, dissertations, and articles requires significant time and effort. Researchers often struggle with organizing ideas, maintaining writing flow, and ensuring proper academic language. Jenni AI helps overcome these challenges by providing **intelligent writing suggestions, content generation, and research support.**

Jenni AI is becoming increasingly popular among **students, researchers, and academics** because it simplifies the writing process and helps produce well-structured academic content.

This article explores **what Jenni AI is, its features, advantages, and how it helps researchers improve their academic writing process.**



Search library...

Sources Collections Filter

Article IF 8.8 Open Access

Prototyping Hardware and Software Environment for Teaching Digital Circuit Design
Trošt, Žemva, Verderber
International Journal of Electrical Engin... - 2021



Cite Details Open PDF

Article IF 2.9

Artificial Intelligence in Autonomous Vehicles: Challenges and Opportunities
Hall, Smith, and Johnson
Artificial Intelligence Review - 2021



Cite Details Open PDF

Preprint Open Access

Exploring the Role of Neural Networks in Natural Language Processing: A Comprehensive Survey
Martinez and Clark
Journal of Social Psychology - 2021



Cite Details Open PDF

Article IF 8.8 Open Access

Artificial Intelligence in Autonomous Vehicles: Challenges and Opportunities
Hall, Smith, and Johnson
Journal of Social Psychology - 2021



Cite Details Open PDF



Hardware Prototyping for Digital Systems: A Review

Introduction

Traditional logic simulation has proven inadequate for comprehensive digital design verification due to its inability to interact with complete systems (Trošt et al., 2001). As a result, hardware prototyping has gained prominence as an

Article Cited by 400 IF 8.8 Open Access
Prototyping Hardware and Software Environment for Teaching Digital Circuit Design
Trošt, Žemva, Verderber
International Journal of Electrical Engin... - 2021
Interactions between the ribosomal exit tunnel and the nascent peptide can affect translation elongation rates. While previous studies have already demonstrated the feasibility of such interactions, little is known about the nature... See more
Edit Parenthetical View Library Source

s before final which can range from icate 3-D models almost significant element of the

Software Environment for Teaching Digital Circuit Design. International Journal of Electrical Engineering Education, 38(4), 368. https://doi.org/10.7227/ijeee.38.4.9

2. Yang, M. C. (2005). A study of prototypes, design activity, and design outcome. Design Studies, 26(6), 649. https://doi.org/10.1016/j.destud.2005.04.005

What did @trost et al conclude in this paper?

The paper (Trošt et al., 2001) discusses a prototyping hardware and software environment developed for teaching digital circuits, integrated circuits, and embedded systems. Here's a summary of the main points:

- Environment: The system uses Field Programmable Gate Array modules for flexibility in digital design applications. It also includes software for hardware verification of logic circuits (Trošt et al., 2001).
Hardware: The hardware setup features FPGA modules (various Xilinx families) connected to a CPLD interface. This interface handles FPGA configuration and hardware verification. I/O modules facilitate standalone operation (Trošt et al., 2001).
Applications & Student Projects: The system is used in digital design practice courses, allowing students to experience the design process from specification to implementation. Students can undertake projects based on their skills, with advanced students even developing their own design ideas (Trošt et al., 2001).

Add to document Copy

What is the latest research on hardware prototyping methodologies

Jenni is thinking...

Current document Web

Library

Ask assistant, use @ to mention specific PDFs...



Send

+ New Blog

Dashboard

History

Brand Context

RECENTS

top AI customer service too...

peanut allergy evolution

Welcome back

Manage your content pipeline and generation settings.

+

Create New Blog

Start a fresh article from any topic.

Start writing →

Recent Activity

View all



top AI customer service tool of 2026

top AI customer service tool of 2026 • Dec 30, 2025



peanut allergy evolution

peanut allergy evolution • Dec 29, 2025



Documents

Understanding the Causes, Impacts...

Search documents

New document

Library

- Understanding the C...
- Understanding the C...
- Understanding the C...
- Understanding the C...

Help

Understanding the Causes, Impacts...



Understanding the Causes, Impacts, and Potential Solutions

Greenhouse Gas
CO2

Understanding the Causes, Impacts, and Potential Solutions of Climate Change

Climate change is a serious threat that poses unprecedented challenges to the stability of the global ecosystem. As the Earth's temperature continues to rise, the effects of climate change have become clear for all to see (Manoli et al., 2016).

Climate change is a serious threat that poses unprecedented challenges to the stability of the global ecosystem. As the Earth's temperature continues to rise, the effects of climate change have become clear for all to see.

Greenhouse Gas

Greenhouse gasses are the side effect of burning fossil fuels. They shine through the atmosphere, trapping heat, and warming the planet, releasing heat back into the atmosphere.

CO2

Carbon dioxide is a chemical compound consisting of one carbon atom covalently double bonded to two oxygen atoms. It is a colorless, odorless gas at room temperature, and as the source of global warming.

References

Manoli, G., Katul, G G., & Marani, G. (2016). Delay-induced rebounds in CO2 emissions and critical time-scales to meet global warming targets. *Earth Future*, 4(10), 1002/2016ef000431

All Library Journals Websites Most Recent

Delay-induced rebounds in CO2 emissions and critical time-scales to meet global warming targets

Gabriele Manoli, Gabriel G. Katul, Marco Marani
Earth Future, 2016

For decades, climate research and policy focused on reducing global greenhouse gas emissions (E) to limit global warming to 2°C above preindustrial levels (Meinshausen et al). Current...

447 29 317 6

A cite source without the badges just to test

Kelsey Gemmill, Daniela D. Winderheim, Wendy J. Dahl
J Child Neurol (journal name), 2021

The division of labor from which so many advantages are derived, is not originally the effect of human wisdom which foresees and intends that general...

Add citation View in new tab

Type author/ title to fetch a library source Add via DOI

What is Jenni AI?

- Jenni AI is an **AI-powered writing assistant** designed to help users write essays, research papers, reports, and academic articles more efficiently.
- It uses advanced **Natural Language Processing (NLP)** and **Artificial Intelligence algorithms** to understand the context of the writing and generate relevant suggestions.
- Jenni AI acts like a smart co-writer that assists users in:
 - Generating ideas for writing
 - Completing sentences and paragraphs
 - Improving writing clarity
 - Managing citations
 - Structuring academic content
- Unlike traditional writing tools that only check grammar or spelling, Jenni AI focuses on **content generation and academic writing support**.
- This makes it especially useful for **students, researchers, and scholars who need assistance during long writing tasks**.

How Jenni AI Works

- Jenni AI works using **advanced AI language models** trained on large amounts of text data. These models learn patterns in human writing and generate meaningful text based on user input.
- The working process of Jenni AI typically includes the following steps:
 1. The user starts writing a sentence or paragraph.
 2. Jenni AI analyzes the context and topic.
 3. The system generates relevant suggestions or completes the sentence.
 4. The user can accept, modify, or ignore the suggestions.
- This interactive writing approach allows users to **maintain control over the content while receiving helpful AI assistance.**
- The tool is designed to support **creative thinking rather than replacing human writing completely.**

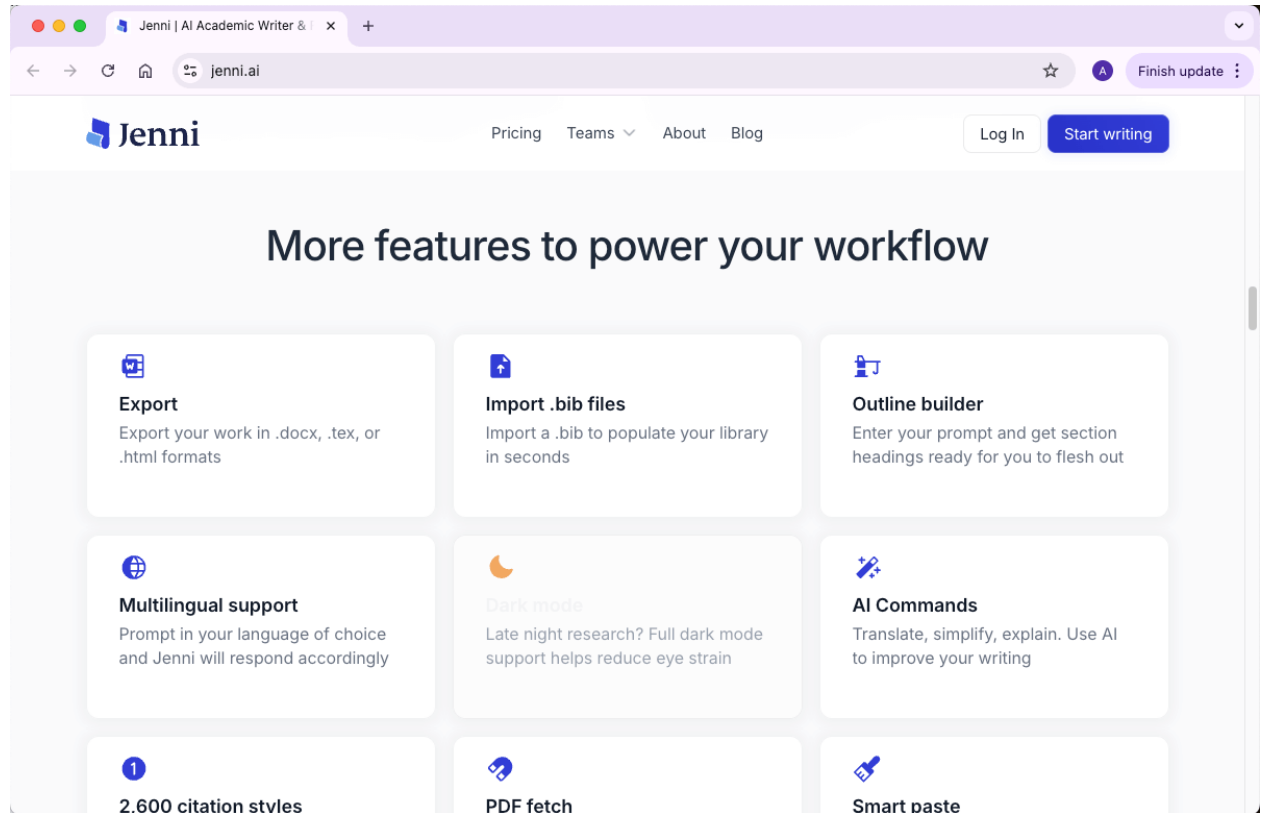
Key Features of Jenni AI

1. AI-Powered Writing Assistance

The screenshot displays the Jenni AI interface, which is divided into three main sections:

- Library:** A sidebar on the left containing a search bar and a list of articles. The first article is "Prototyping Hardware and Software Environment for Teaching Digital Circuit Design" by Trošt, Zemva, and Verderber, published in the *International Journal of Electrical Engineering* in 2021. Other articles include "Artificial Intelligence in Autonomous Vehicles: Challenges and Opportunities" and "Exploring the Role of Neural Networks in Natural Language Processing: A Comprehensive Survey".
- Document Editor:** The central workspace shows a document titled "Hardware Prototyping for Digital Systems: A Review". The text includes an introduction discussing traditional logic simulation and the rise of hardware prototyping. A citation for Trošt et al. (2001) is visible. The interface includes editing tools like "Edit", "Parentetical", and "View", and a word count of 659 words.
- AI Chat:** A chat window on the right allows users to interact with the AI. A query asks, "What did @trost et al conclude in this paper?". The AI responds with a summary of the paper's main points, such as the use of Field Programmable Gate Array (FPGA) modules and the system's application in digital design practice courses. Another query asks for the latest research on hardware prototyping methodologies.





- One of the most important features of Jenni AI is its real-time writing assistance.
- As users write, the AI automatically suggests the next sentence or paragraph. This helps maintain writing flow and prevents writer's block.
- For example, if a researcher starts writing:
 - *"Artificial intelligence is transforming modern education by..."*
- Jenni AI may suggest a continuation such as:
 - *"providing intelligent tutoring systems, automated grading, and personalized learning experiences."*
- The user can then choose to accept or modify the suggestion.
- This feature significantly speeds up the writing process.

2. Research Paper Writing Support

- Jenni AI is particularly helpful for academic writing tasks, including:
 - Research papers
 - Literature reviews
 - Essays
 - Reports
 - Thesis writing
- It helps writers structure their ideas logically and maintain **formal academic language**.
 - Researchers can use Jenni AI to:
 - Expand ideas into paragraphs
 - Improve sentence clarity
 - Organize arguments effectively
- This makes the tool extremely useful for **students working on assignments and research projects**.

3. Citation and Reference Assistance

- Academic writing requires proper referencing to avoid plagiarism and acknowledge original authors.
- Jenni AI supports **citation generation**, allowing users to add references in different academic formats.
- Common citation styles supported include:
 - APA
 - MLA
 - Harvard
 - Chicago

- By simplifying citation management, Jenni AI helps researchers maintain **academic integrity** while writing.

4. Overcoming Writer's Block

- Many writers experience **writer's block**, where they struggle to continue writing after starting a document.
- Jenni AI helps overcome this problem by suggesting ideas and completing sentences automatically.
- This feature helps researchers:
 - Maintain writing momentum
 - Generate new ideas
 - Continue writing without interruptions
- As a result, the writing process becomes **faster and more efficient**.

5. User-Friendly Interface

- Jenni AI provides a simple and easy-to-use writing interface. Even users with minimal technical knowledge can quickly start using the tool.
- The platform typically includes:
 - A document editor
 - AI suggestion panel
 - Citation tools
 - Writing assistance options
- Because of its intuitive design, Jenni AI is widely used by **students and early-stage researchers**.

Advantages of Using Jenni AI

Jenni AI provides several benefits that make it a valuable tool for academic writing.

1. Improves Writing Speed

- AI suggestions help writers produce content faster without compromising quality.

2. Enhances Writing Quality

- Jenni AI helps improve sentence structure, clarity, and readability.

3. Supports Academic Research

- The tool assists researchers in organizing ideas and maintaining academic writing standards.

4. Reduces Writer's Block

- Automatic suggestions help writers continue writing even when they feel stuck.

5. Saves Time

- Researchers can focus more on ideas and analysis rather than spending time struggling with writing.

Limitations of AI Writing Tools

- Although Jenni AI is a powerful writing assistant, it is important to understand its limitations.
- AI-generated content should always be reviewed and edited by the user.
- Some possible limitations include:
 - AI may generate incorrect or irrelevant content.
 - Human creativity and critical thinking are still necessary.
 - Over-reliance on AI may reduce independent writing skills.
- Therefore, Jenni AI should be used as a **support tool rather than a replacement for human writing.**

Role of AI Tools in Modern Education

- AI tools like Jenni AI are becoming increasingly important in modern education.
- They help students and researchers:
 - Improve productivity
 - Learn better writing techniques
 - Manage academic workloads efficiently
- Educational institutions are gradually integrating AI tools into **research training and academic support systems.**
- However, students must also develop strong **critical thinking and writing skills** alongside using AI tools.

- PROF. KRISHNA PATEL